



PRH Marine Series Plastic Horn Loudspeaker

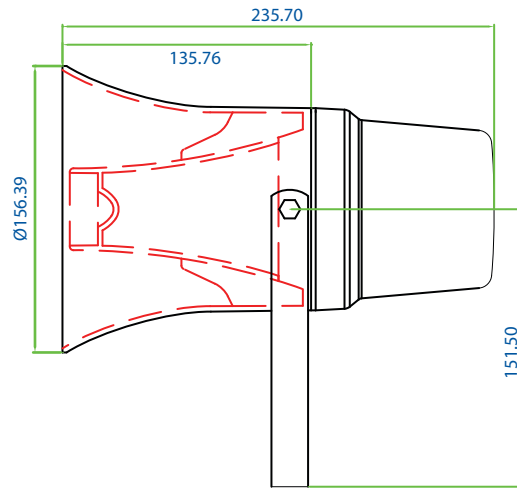
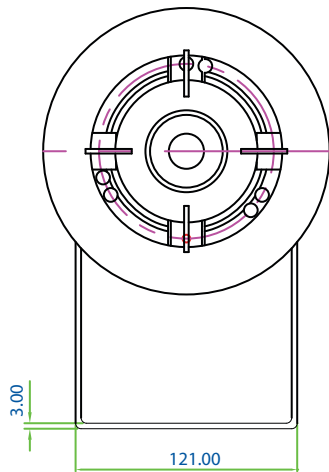


- 100 Hours Life Tested
- CE Certified (EMC & LVD)
- IP Rated
- Rustproof
- UL94V0
- BS 5839 Part 8
- EASE Data
- RoHS Compliance
- UV Protected
- Withstanding/Insulation Tested

- Ideal for both marine and industrial applications. Used by various shipyards worldwide.
- ASTM salt spray 500 hours tested.
- ASTM UV resistance 600 hours tested.
- Water protected to IEC529 IP66.
- Very high efficiency.
- Built-in line transformer with screwdriver adjustable power selector (sealed).
- Two cable entries to enable loop in loop out installation.
- Equipped with rust-proof V4A exterior hardware.

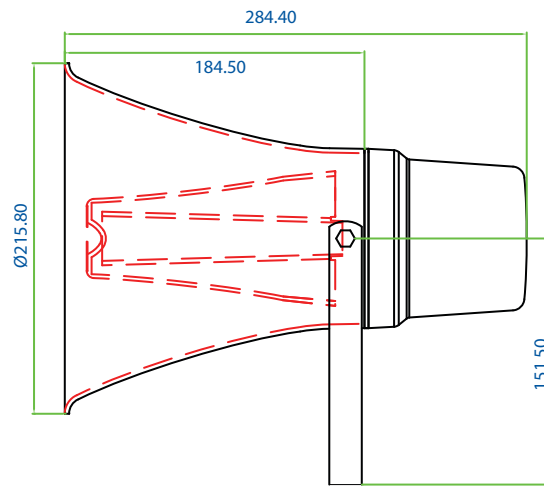
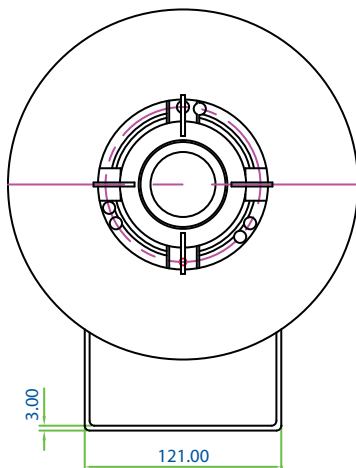
Model No.	PRH-6101NMS	PRH-8151NMS	PRH-10301NMS
Rated Power (rms)	10W	15W	30W
Impedance	1kΩ, 2kΩ, 4kΩ, 8kΩ	667Ω, 1.33kΩ, 2.67kΩ & 5.33kΩ	333Ω, 666Ω, 1.33kΩ, 2.66kΩ
Power Taps @ 100V	10W, 5W, 2.5W, 1.25W	15W, 7.5W, 3.75W, 1.87W	30W, 15W, 7.5W, 3.75W
Power Taps @ 70V	5W, 2.5W, 1.25W, 0.625W	7.5W, 3.75W, 1.87W, 0.94W	15W, 7.5W, 3.75W, 1.87W
SPL (1W / 1M)	106 dB	108 dB	110 dB
Max. SPL (Rated W / 1M)	116 dB	120 dB	125 dB
Frequency Range (-10dB)	380 Hz ~ 9K Hz	460 Hz ~ 9K Hz	400 Hz ~ 7.5K Hz
Frequency Range (-20dB)	340 Hz ~ 11K Hz	300 Hz ~ 11K Hz	270 Hz ~ 12K Hz
Dispersion 1K Hz / 4K Hz	210° / 45°	120° / 30°	110° / 30°
Ambient Temperature	-30°C ~ +60°C		
Water Protection	IEC529 IP66		
Power Selection	Selecting Switch		
Material	Housing: High impact ABS (ASTM UV resistance 600 hours tested)		
Colour / Finish	Light Grey (RAL 7035)		
Dimensions	156.4 (6.15) Dia. X 220.7 (8.67) Length mm. (in.)	215.8 (8.5) Dia. X 269.4 (10.6) Length mm. (in.)	232.7 (9.16) Dia. X 309.6 (12.19) Length mm. (in.)
Net Weight (ea)	1.54 kgs (3.4 lbs.)	1.74 kgs (3.84 lbs.)	2.11 kgs (4.65 lbs.)
Mounting	U Type V4A Stainless Steel Bracket		

PRH-6101NMS



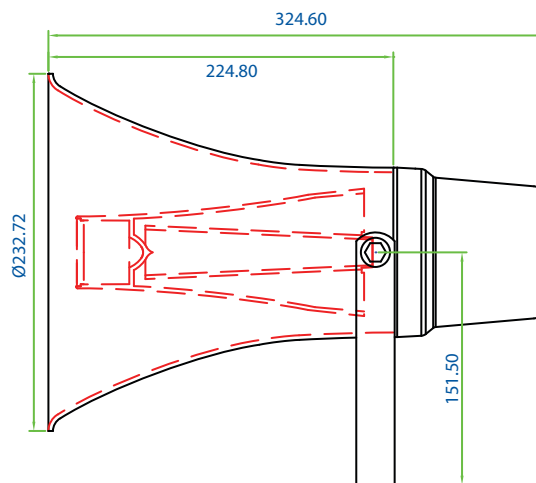
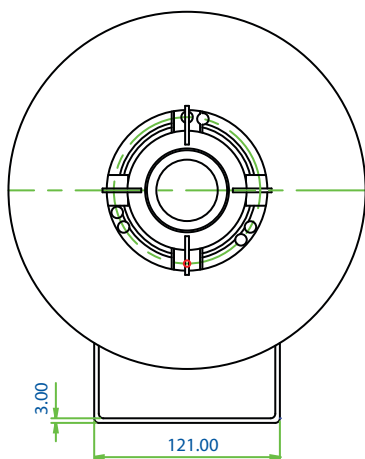
Unit: mm

PRH-8151NMS



Unit: mm

PRH-10301NMS



Unit: mm